

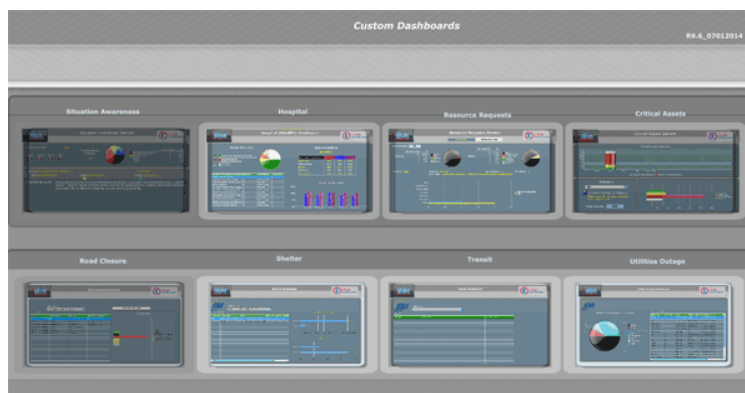
Viewing Custom Dashboards

supportcenter.nc4.com/hc/en-us/articles/218844837-Viewing-Custom-Dashboards

Dashboard is an optional feature. If this feature is enabled on your system, and you are a member of the ETeam System Admin or ETeam Managers group, or have been added as member to the ETeam Dashboard Access group, you will see the *Dashboard* option on the Toolbar at the top of the E Team main window.

Using state of the art dashboard tools E Team provides intuitive, dynamic visualization of E-Team live data and enables the management of and Emergency Management Centers to quickly, easily get a clear picture of the overall state of situations and correctly plan for/lead the follow-on actions.

Clicking on the *Dashboards* option launches the dashboards menu containing images of the dashboards used by your organization. This menu will open in a new tab or new browser window depending on your system setup.



Rolling over an image will enhance that image allowing you to see the type of detail available.

Clicking on an image will launch that dashboard.

Each dashboard will have various filtering and/or viewing options. The dashboard will refresh as you make these choices.

To return to the Menu just click the *Menu* option at the bottom of the dashboard screen.

To close the window close the tab or browser window.